

MCKINLEY PARK

CHICAGO, IL



2016

ILLINOIS YOUTH SURVEY



TABLE OF CONTENTS

I. INTRODUCTION

II. UNDERAGE DRINKING

III. MARIJUANA USE

**IV. CONTRIBUTING FACTORS IN FAMILY
& NEIGHBORHOOD ENVIRONMENTS**

V. McK-UDOS' PREVENTION STRATEGIES

INTRODUCTION

McKINLEY PARK UNDERAGE DRINKING & OTHER SUBSTANCES COALITION (McK-UDOS)

McK-UDOS is composed of a multi-sector group committed to working together to prevent underage drinking and marijuana use among youth in the McKinley Park community of Chicago.

ILLINOIS YOUTH SURVEY (IYS)

Funded by the Illinois Department of Human Services (IDHS) since 1990, the Illinois Youth Survey (IYS) is a statewide survey administered every other year to 6th, 8th, 10th, and 12th graders in schools throughout the state. The IYS gathers information on a variety of health-related behaviors, including substance use, mental health, violence, bullying, nutrition, and physical activity. It also assesses family, school, and neighborhood environments that contribute to youth substance use. It is available to all schools, public and private, at no cost. Each participating school receives a report that is specific to its student body. For more information, please visit: <https://iys.cprd.illinois.edu/>.



SCHOOLS INVOLVED

Thomas Kelly High School
Evergreen Academy Middle School
Brighton Park Middle School
Pickard Elementary School

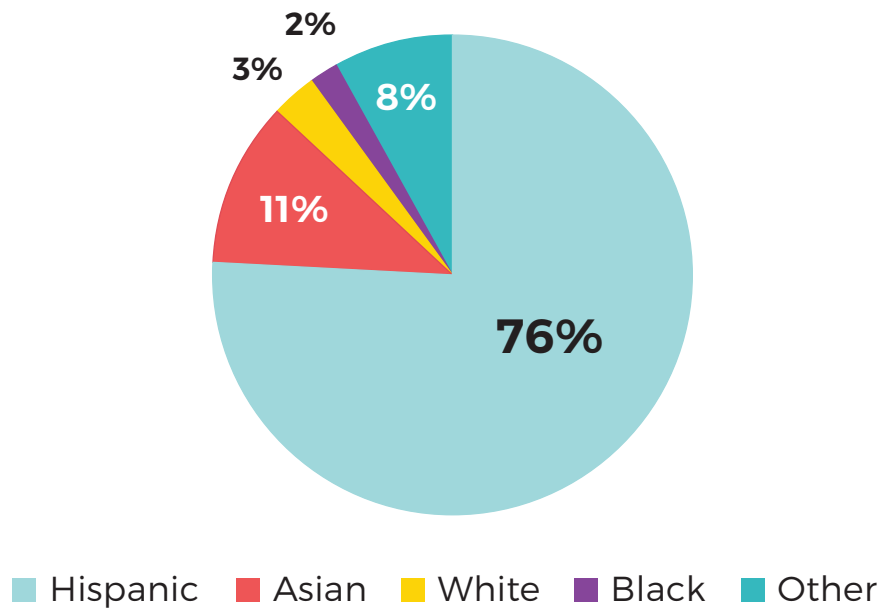
GRADES INVOLVED

8th: 189 students
10th: 230 students
12th: 179 students
Total: 598 students

BREAKDOWN BY GENDER



BREAKDOWN BY RACE/ETHNICITY



WHO DO YOU LIVE WITH MOST OF THE TIME?

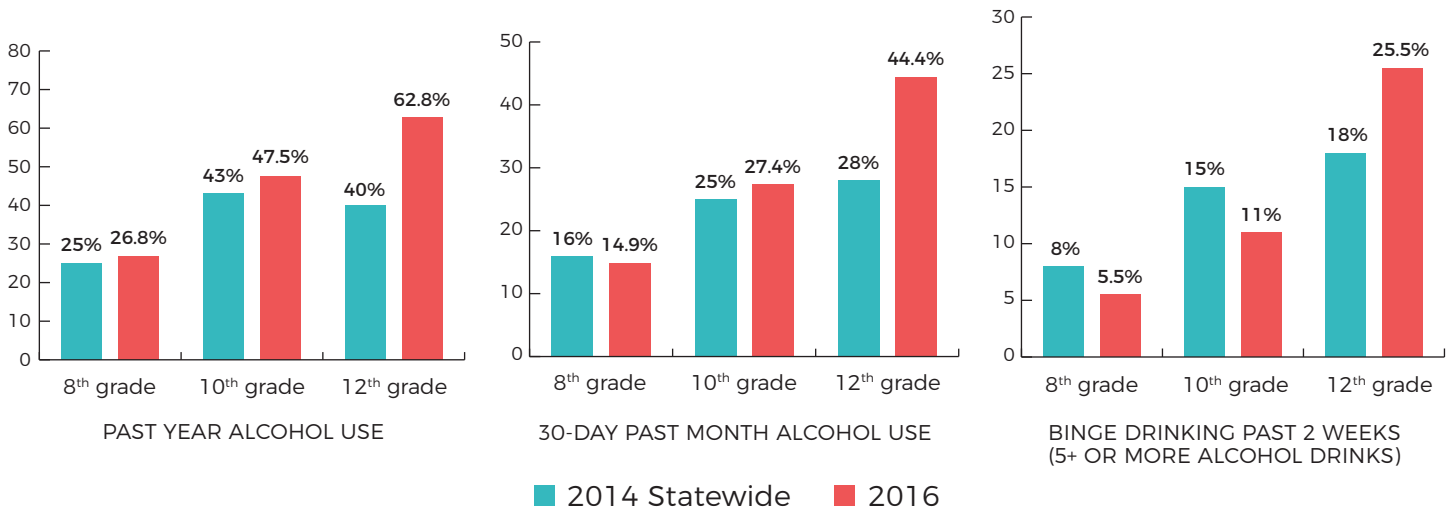
More than **60%** of students live with both parents. A little over **20%** live in a single-parent household (mostly with their moms).

Over **95%** of students are eligible to receive a free lunch.



UNDERAGE DRINKING

Average age of first having more than a sip or two of alcohol – 14.8 years old



MOST POPULAR TYPES OF ALCOHOL

- Liquor with energy drinks
- Beer
- Liquor (vodka, whiskey, etc.)
- Alcopops (wine coolers, hard lemonade, hard cider)



PERCEPTIONS OF PEER ALCOHOL USE COMPARED TO ACTUAL USE

Teens perceive that most of their peers are drinking alcohol. Among high school students, **58%** believe that over **50%** of the students at their school consumed alcohol in the past month. In reality, only **26.5%** of students drank alcohol in the past 30 days.

TOP 3 SOURCES OF ALCOHOL

- 1) A friend
- 2) A party
- 3) Parents with their permission

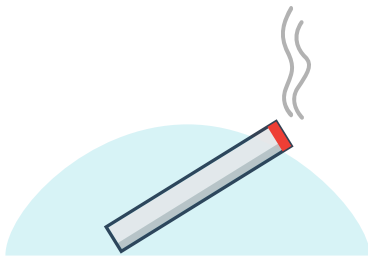
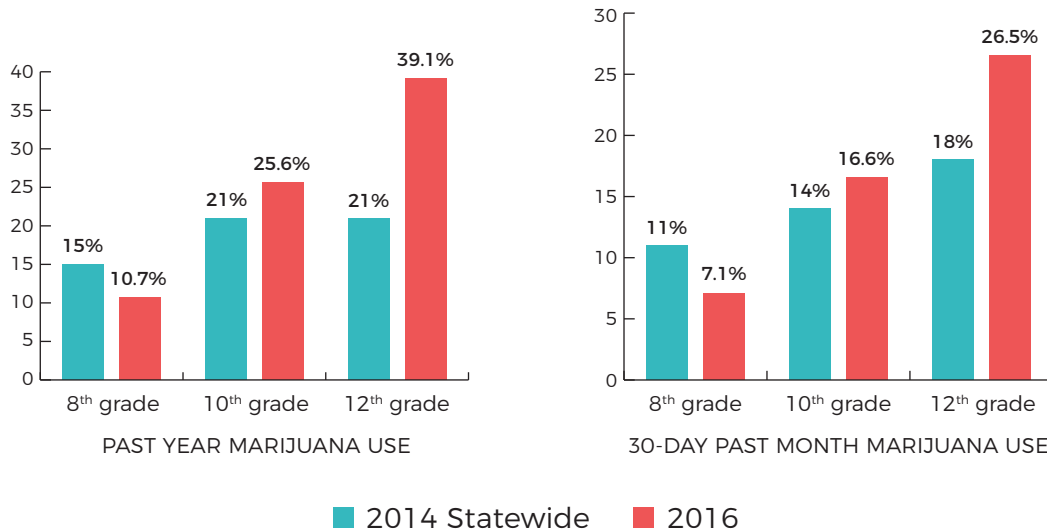
ALCOHOL-RELATED CONSEQUENCES

- Performed poorly on a test or important project
- Been in trouble with the police
- Damaged property
- Got into an argument or fight
- Been hurt or injured
- Been a victim of violent crime
- Been treated in a hospital emergency department

17% of high schoolers have experienced a negative consequence of alcohol 1-2 times in the past year.

MARIJUANA USE

Average age of first having smoked marijuana – 15.1 years old



PERCEIVED PEER NORMS

Nearly **37%** of all high school students believe that they would be seen as cool by their peers if they smoke marijuana.



PERCEIVED RISK ASSOCIATED WITH USE

About half of all students perceive that smoking marijuana (1-2x a week) is not harmful to them physically or in other ways. This is double the number of students who believe that underage drinking is not harmful.

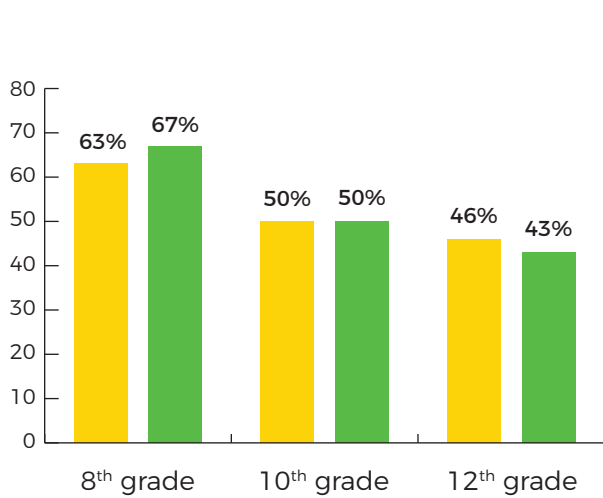
TOP 3 SOURCES OF MARIJUANA

- 1) A friend
- 2) Someone who sells drugs
- 3) Parents without their permission

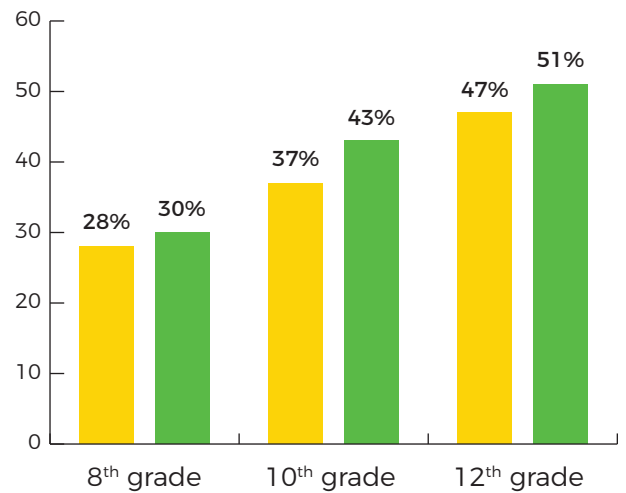
PERCEPTIONS OF PEER MARIJUANA USE COMPARED TO ACTUAL USE

Among high school students, **59.5%** believe that over **50%** of the students at their school consumed marijuana in the past month. In reality, only **16%** of students used marijuana in the past 30 days

CONTRIBUTING FACTORS IN FAMILY & NEIGHBORHOOD ENVIRONMENTS



PARENT COMMUNICATION ABOUT DRUGS – IN THE PAST YEAR, HAVE YOUR PARENTS/GUARDIANS TALKED TO YOU ABOUT NOT USING?



PERCEIVED ACCESS – IF YOU WANTED TO GET THE FOLLOWING, HOW EASY WOULD IT BE FOR YOU TO GET SOME?

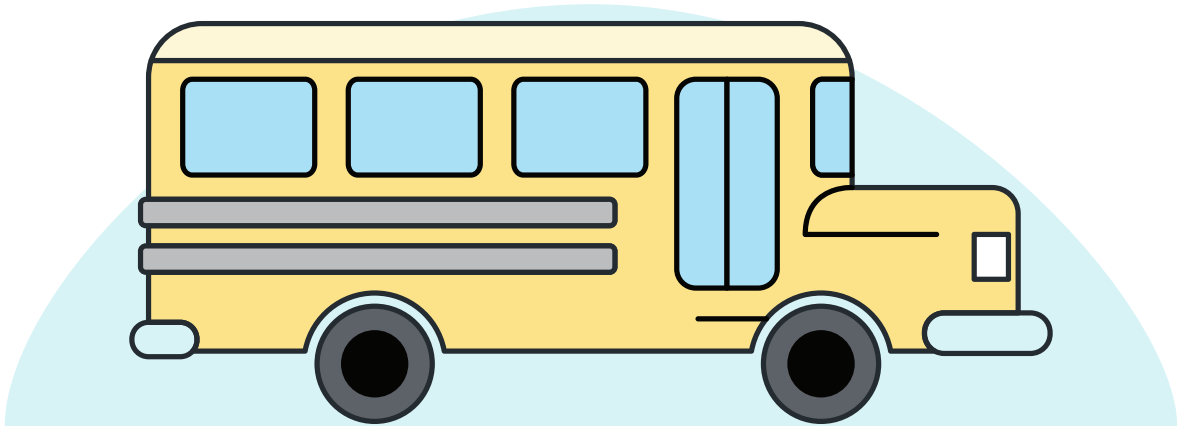
■ ALCOHOL ■ MARIJUANA



PARENT ALCOHOL MONITORING: WOULD YOU BE CAUGHT BY YOUR PARENTS IF YOU DRANK ALCOHOL WITHOUT YOUR PARENTS' PERMISSION?

In 8th grade, about **35%** of students report that they would never get caught by their parents if they drank alcohol without their parents' permission. By the time students get into high school, nearly **60%** report that they would never get caught.

McK-UDOS' PREVENTION STRATEGIES



YOUTH

- Raise awareness among youth about the harms from marijuana use through a public education and social marketing campaign.
- Change youth perceptions about their peers drinking alcohol and using marijuana through a social norms campaign.

PARENTS

- Raise awareness among parents about the social host law, and the harms from underage drinking through a public education and social marketing campaign.
- Educate parents about the importance of communicating to their teens about not using alcohol and marijuana, and effective communication strategies through a public education campaign.
- Educate parents about the importance of parental monitoring, and effective strategies for monitoring their teens to prevent underage drinking through a public education campaign.

SCHOOLS AND COMMUNITY

- Raise awareness among community members (e.g. schools, businesses, law enforcement) about the social host law, and the harms from underage drinking through a public education and social marketing campaign.
- Mobilize the community to advocate for policies that prevent selling and using marijuana on school grounds and at local parks.



ACKNOWLEDGMENTS

We want to acknowledge the Office of National Drug Control Policy (ONDCP) and the Substance Abuse and Mental Health Services Administration (SAMHSA) for funding our coalition through the Drug Free Communities Support Program (DFC). We also want to thank our coalition members and partners for their support. Lastly, we are indebted to the schools who participated in the 2016 IYS. The data we gather from their students provide critical information for preventing substance use among youth in McKinley Park.